

Contact;
0845 644 0196
info@enims.co.uk
www.enims.co.uk

enims News

Summer 2018

Welcome to the summer survey season. Summer is the optimal time for botanical/Phase 1 habitat surveys and many protected species surveys; Bat, water vole, dormice nest tubes and otter surveys are all best done this time of year.

In this newsletter we're focusing on bats, this protected species is frequently encountered in buildings and trees and needs careful consideration when Planning Permission is required. Our case studies give an insight into how enims works with clients and bats in four very different projects, to achieve the best outcomes.

enims ecologists have been hard at work recently undertaking Ecological Clerk of Works on many of the UK Highways Network and much more, see our enims update inside for more details...

Inside this issue;



ENIMS UPDATE

Relocating lizards in Suffolk and our ongoing Highways collaborations

[Read more](#)



PROTECTED SPECIES SURVEYS

The bat surveying window is now open

[Read more](#)



CASE STUDY

Preliminary Roost Assessments and Bat Surveys

[Read more](#)



ACCREDITATIONS

enims systems make great collaborations.

National Highways Sector Scheme 18

[Read more](#)



VOLUNTEERING

Bat biometrics in Berkshire and enims training opportunities

[Read more](#)

SURVEY CALENDAR

What protected species should you be planning to survey for now? Let enims help you plan

[Read more](#)

“enims provides workable environmental solutions, delivered in a timely and flexible way that gives the confidence and added value that our clients have come to expect from enims. The openness and trust that we build in our unique collaborative approach ensures that the environmental services we provide are designed to meet our client’s needs”

enims update

Summer 2018

enims has been undertaking Preliminary Ecological Appraisals and Preliminary Roost Assessments of several sites over Surrey, Hampshire, Norfolk and Suffolk along with aerial inspections of trees to determine their potential to support roosting bats.



enims ecologist taking a GPS location reference for a tree for accurate placement

enims Highways ecologists have been carrying out ecological clerk of works (ECoW) for our clients and their supply chain partners in Highways England Areas 3, 5, 6 and 7. enims ecologists who are

all experienced in managing environmental legislation for highways schemes have been providing pre-works ecology checks of the soft estate, production of method statements and giving toolbox talks as well as supervising vegetation clearance and soil stripping works to ensure legal compliance and protecting habitats and species while enabling projects to proceed.

Works were carried out on the **M25 verges** to maintain and improve traffic flow. Vegetation was cleared under ecological supervision around Junction 23 to allow road widening at the roundabout. Drainage ditches to be cleared for increased drainage capacity were checked for protected species. Working closely with Contractors and giving clear guidance from the enims teams has allowed this on-going project to continue within the planned timescales. enims

Highways ecologists have been completing pre-works checks and are providing practical advice on mitigation as well as biodiversity enhancements for this scheme.

A team of enims Highways ecologists are **supporting ongoing works schemes** for a 70km stretch of Area 7 motorway. The main scheme includes resurfacing, drainage works and essential bridge maintenance with smaller works schemes ongoing simultaneously. The area supports populations of bats, great crested newts, reptiles and badger setts which are all protected by law. The ecologists are assessing habitats and trees along the highway embankments for suitability, and bridges which may contain bat roosts. Impacts to protected species from the works are evaluated and recommendations given to ensure compliance whilst permitting works to proceed.

enims ecologists supports ongoing Area 7 works scheme

Protected species surveys

Summer is the optimal time to conduct botanical/Phase 1, water vole, otter and bat surveys and for dormouse nest box checks.

The active season for bats is May to September and this is the window for bat survey works to be completed. enims provide experienced, competent ecologists who are able to give advice on bats to homeowners and developers. We also have extensive knowledge of working with Highways to offer advice on industrial schemes and roads.

All native bat species are defined as European Protected Species which means that alterations to buildings, trees and other structures may require a bat survey before Planning Permission is granted. Structures can be assessed for bat roost potential at any time of year – this is known as a Preliminary Roost Assessment and trees can undergo Aerial Inspections for roosts. If potential for bats is found then further investigations may be necessary such as emergence and return to roost surveys.

A team of **enims Highways ecologists** have completed an eight week ECoW nights supervision of Area 6, where vegetation clearance was required as a landscape enhancement for reptiles. Protected species included badgers, nesting birds, amphibians, bats as well as reptiles.



enims Highways ecologist relocating a common lizard to a receptor site .

Bridges over the Area 3 Network have undergone inspections by **enims bat licensed ecologists** for potential roosts which may act as a constraint to planned works. Mobile scaffold towers, high-powered torches and endoscopes are used to investigate crevices in the structures.



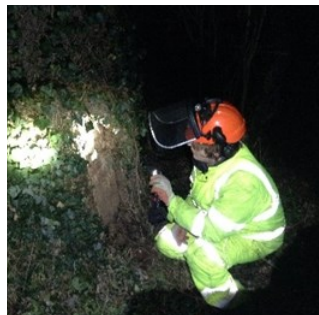
enims Highways ecologist inspecting a potential bat roost feature in a tree using an endoscope

Our new and improved **near miss reporting system** is designed to be accessible whilst on-site, the new app has been downloaded onto mobile phones, allowing surveyors to be constantly in touch with on-call supervisors and improving our health and safety communications.

enims proudly announces 21,476.25 **safe working hours** were achieved during 2017. This fantastic success is due to our continuously improving high standards and innovations.

[Read more](#)

Tree inspections for bat roost features on a number of trees on M25 verges allowed for safe dismantling with enims Highways



enims Highways ecologist inspecting a potential bat roost feature in an oak tree

ecologists on-site advising simple mitigation to avoiding any danger to protected species and preventing delays to works. Standing deadwood, logs and brash formed habitat piles allowing ecological enhancements for biodiversity.

enims environmentalists attended a training workshop relating to **collaborative working relationships** which will improve relationships between enims and our clients.



enims environmentalists were among those attending a graduate and trainee workshop in April this year

Taking part in team building exercises and talking about the importance of collaborative working, the benefits, the behaviours involved and the challenges faced when working collaboratively. It was a great opportunity to network with graduates and trainees from all disciplines of the highways industry from organisations across Area 3 with representatives from many organisations such as Kier, R&W, Chevron, WJ, Carnell and many others. It was aimed at instilling the virtues of collaborative working with those just starting out in the industry to ensure collaborative working continues long into the future.

[Read more.](#)

enims is improving collaborative working relationships with clients

Case Study: Bat Surveys

enims completed the task with compliance to all legislation

Bats can utilise many different structures and as a Protected Species ecological checks will often be a requirement before Planning Permission can be granted. enims can assess and survey for bats, work with the client to recommend pragmatic mitigation and obtain a License from Natural England where required. Full details of all these case studies can be found on our [website](#).

THE PROJECT OVERVIEW

The Highways Area 3 Network required essential maintenance and refurbishment works to be undertaken on bridges across the system. The enims team

legislation, the presence of bats may act as a



area needed to be assessed and a bat activity survey was required.

enims completed the surveys and researched the project which provided evidence the bridge would allow the passage of bats and not disrupt commuting routes.



enims Highways ecologist using an endoscope to look for bats under a bridge for a Highways client.

Long-eared bat found during an inspection of a residential property

constraint in achieving this aim. We knew bats were present, but survey work was needed to discover more information.

THE PROJECT OVERVIEW

A new bridge was to be built over a railway line in order to support increased traffic from a new road and proposed housing



A new bridge was required to cross the railway line

THE PROJECT OVERVIEW

A large, residential house in Hampshire was to undergo renovations to its structure, including the roof. As all native bat species are fully protected by nature conservation

development.

Information was essential to obtain planning permission. The impacts of the new bridge on bat species in the

THE PROJECT OVERVIEW

A listed, historic barn in Hampshire was to be repaired and renovated. enims had supported the successful planning application by undertaking a bat survey at the site, which had found bats were utilising the structure. enims obtained a Natural England Protected Species License for the client, to allow the works to proceed and were requested back to fulfil the License requirements to supervise the dismantle of the barn, enims completed the task with compliance to all legislation.



The renovation of a Listed barn required careful supervision by enims ecologists under License

enims obtained a Natural England Protected Species License for the client, to allow the works to proceed

ISO14001:2015 EMS and Environmental Performance

[*Looking to achieve ISO14001:2015 certification?*](#)

[*Click here to see how enims can support you!*](#)

Enims continually strives to improve environmental performance using innovation and efficiency improvements

enims works continuously to analyse and improve our environmental performance. We monitor all sources of carbon emissions related to our business and aim to reduce and improve at all possible opportunities through measures such as installing energy efficient light bulbs in our offices and lift sharing. We reduced our emissions by 54.4% in 2017 compared with 2016 figures and aim to continue reducing our emissions.

As part of our ISO14001 certification we are continuously improving and innovating in relation to our environmental performance. In May we will complete the transition to the latest 2015 iteration of ISO14001 thus ensuring best environmental practice across the organisation.

We're also working hard to reduce our plastic footprint across the organisation, our latest plastic reduction initiative involves supplying every member of staff with a re-usable water bottle to reduce single use plastic waste.



National Highway Sector Scheme 18

Sector Schemes were developed in order to tailor the BS ISO 9001 certification to different industries within the UK road network to ensure the criteria required is relevant to that particular industry. National Highways Sector Scheme 18 is a bespoke quality management scheme which customises ISO 9001 to the Highways industry and covers landscape, natural environment and ecology.

enims business management systems have certification to BS ISO 9001 for quality management. These strict regulations are designed to provide a benchmark which can assure clients enims has a trained, competent workforce, is focused on continuous improvement and is consistently

producing high quality work. We have a strong customer focus with the work we produce continually meeting customer requirements and industry standards which reduces costs for the client and ensures a project is completed to specification.

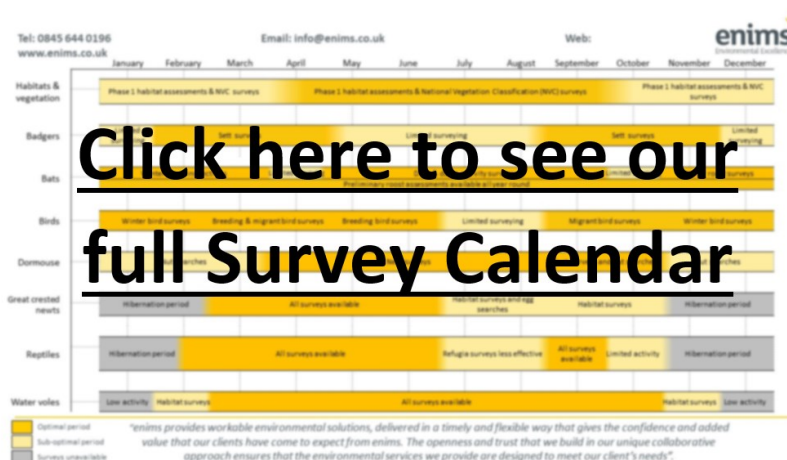
Sector Schemes are mandatory for Highways England and other infrastructure provider contracts, guaranteeing the workforce is fully trained and competent to work. All enims ecologists have completed the Construction Skills Certification Scheme (CSCS) and carry the relevant card with them whilst working. There is a strong emphasis on health and safety in the scheme which affirms enims already outstanding focus and record in this area.



Office 4, Burcot Farm
East Stratton
Winchester
Hampshire SO21 3DZ

The Grain Barn Office
White House Farm
Salhouse Road
Norwich NR13 6LB

0845 644 0196
www.enims.co.uk
info@enims.co.uk



Protected species surveys

"enims are able to take your project from concept to completion, incorporating any required surveys, DNA and acoustic analysis, pragmatic mitigation and communications with Natural England if Licensing is necessary."

For advice on all surveys [email](mailto:info@enims.co.uk) or phone us on 0845 644 0196



[Subscribe](#) to our new quarterly Newsletter

Next issue -
Autumn 2018

The enims team have been constructing a new website

www.enims.co.uk



Noctule bats are one of the larger UK species and are uncommon but widespread

During April, enims ecologist Jonathan, took part in a **voluntary bat box check** with a licensed bat worker, James Shipman at Berkshire and South Bucks Bat group. The bat boxes were checked near to Newbury in Berkshire. Jonathan handled soprano pipistrelle, brown long eared and noctule bats and improved his skills of sexing, species identification and taking biometric measurements. This is part of the training for Jonathan to gain a bat licence. These bat box checks provide valuable ecological data on bat populations of Berkshire and influences the management of these sites for bats.

enims are investing in staff training in 2018 with many of our ecologists undertaking structured training courses to boost their knowledge and qualifications.

[Read more](#)

BS 42020:2013
Biodiversity Certification

